



NEXT CLUB MEETING

Tote Centre Community Hall
100 Joynton Ave., Zetland
Tuesday 9, August @ 7.00pm

CONTACT DETAILS



0432 461 025



info@sydneycitybonsai.org.au



<http://sydneycitybonsai.org.au>



PO Box 486
Summerhill NSW 2130

COMMITTEE MEMBERS

Patron	TBA
President	Bryan
Vice President	Ed
Secretary	David
Treasurer	John
Newsletter Editor	Chris
Librarian	Vacant
Committee	Frank + above

MEMBERSHIP

Full membership	\$40
Concession	\$25
Family	\$55
Pensioner	\$25

SCBC wishes to thank Sydney City Council for their continued support for our Club by providing the meeting hall at a concessional rate.

NEWSLETTER CONTENTS

- Monthly Meeting Feedback Page 2
- August Meeting Agenda Page 2
- Swap Table Page 2
- Facebook Page Page 2
- Membership Fees are due Page 2
- Grewia (Lavendar Star) by Lee Page 3
- What People get up to Page 5
- Articles of Interest Page 5
- Things to do this Month including projected temperatures Page 6
- Events Calendar Page 7

EDITORIAL MATTERS

We always welcome any contributions from members, so if you have a project underway, have a query, want to sell/swap/buy something, or otherwise have a tale to share, please get in contact via info@sydneycitybonsai.org.au or one of the Committee members.



If you are into Nebari, it's hard to go past a Swamp Cypress



**MONTHLY MEETING FEEDBACK -
July**

The July meeting is traditionally our AGM but last year Covid had interrupted this schedule. Thankfully, this year we were able to have our AGM. Due to a number of reasons several regulars were not able to turn up but their absence was somewhat compensated by the attendance of a new member. Anita brought a couple of nice trees including a Black pine previously owned by Sue Brennan and a nice juniper. Sadly your editor forgot to take a few photos – my apologies Anita.

First matter of business was the AGM which included a report from Chris, the outgoing President. The President acknowledged his appreciation for the support and efforts of all elected officers, during what has been a trying year. This was followed by Bryan's Treasurer's report and then the meeting was handed over to Anita as the Returning Officer. All positions were declared vacant and nominations for positions were called. The positions were filled as listed below:-

President	Bryan Everts	Newsletter Editor	Chris Denton
Vice President	Ed Hatrick-Smith	Librarian	Vacant
Secretary	David Peirce	Committee members	Frank + those above
Treasurer	John Brown		

The AGM was supposed to be followed by a presentation on constructing concrete pots by Chris. Due to the number of attendees and the remaining time, it was decided to defer the demo until next month. Attention then focussed on Anita's trees.

**AUGUST MEETING AGENDA –
Pruning and Design Demo**

The theme for the August meeting will be bare trees so bring along a tree or two. David will be giving a demonstration styling and design. He will be working on a crab apple which he promises to give a serious pruning. Input and discussion around this and a few melaleuca claret tops he plans to air layer will be welcome.

SWAP TABLE

There will be a Swap Table at the next meeting which will be stocked with whatever is brought along. Members are encouraged to contribute to the table. Bring some loose change and maybe grab a bargain.

FACEBOOK PAGE

The private Facebook page run by John Brown is still going strong and anyone interested in participating should contact John for an invitation. I am getting feedback that there is some good quality chat on the Facebook page and members are encouraged to join.

MEMBERSHIP FEES ARE DUE

Membership fees are due. Payment on time is gratefully appreciated. You can see John for a cash renewal or pay your fees electronically to the following account
(please include your name in the payment details):-

Sydney City Bonsai Club Incorporated
BSB : 032-152
A/C : 166305



GREWIA (LAVENDAR STAR) BY Lee

Grewia is an evergreen native of South Africa and is a beautiful flowering plant but seldom seen in bonsai displays. I am basing this article on two short, early attempts and the Grewia I have now

had for 2 years.

In gardens the Grewia grows to be a substantial bush and is happy in sun or part shade. It is a tree that shoots rapidly and flowers develop on the ends of the branches. Keeping it in a controlled shape and flowering is a challenge in bonsai. I have seen garden bushes with substantial trunks and one bonsai with an impressive trunk, obviously collected. In a pot it grows slowly. Young branches are easy to shape but more mature branches resist movement so choice of a plant is important. Sadly, the majority of the plants you see in nurseries have been allowed to develop with very straight trunks in positions that are impossible to alter. One option is to buy a very young plant and shape it from the beginning by ground growing and wiring and rewiring.

I was fortunate to buy a Grewia at a bonsai sale. It was well priced because it had been a bit neglected and was hungry and I was attracted to it because the branches had movement. The cascade branch was able to be moved forward enough to condense the tree and the apex and branches were wired to start the shaping.



As I bought it

After the first styling



Now I like my trees in pots, no matter how much they would benefit from a larger container. I view my bonsai from my dining and kitchen windows and I don't want to see a bench of plastic pots. So I immediately condemn my trees to slower development but that's how it is in my stable. The Grewia has been wired twice in two years, wire left on 6-9 months and there is not a wire mark anywhere. It is a slow thickener. The glory of the Grewia are the small leaves and the flowers.



Oh the flowers - each flower lasts only one day but the tree flowers and flowers and flowers. Cut back hard to regain shape and in 6 weeks there will be flower buds on the end of the trimmed branchlets. If you stagger your pruning you will have flowers for months and months and months. It has been flowering since spring and has just started to ease off. Now that beats any azalea or camellia in my book. It is not a showy tree like the azalea and camellia with brilliant flowers that capture the attention. It is quiet and refined and draws you in by the quality of its styling and the 10c piece size flowers.



Two years in my training and ready for a mid-winter trim, unfortunately removing the remaining buds and flowers but still a necessity.

After pruning in late June.



Yes, it has styling faults, some faults I can't correct, some I can by placing back branches to the right. I could reduce the height but I want the taller skeleton for the floral display. Another couple of years and a larger pot will see balance improved while maintaining the integrity of the tree.

For those of you who might, like me, be hunting a good stock Grewia, I can only suggest attending bonsai shows with sale tables. It would be very good luck to find a potential good shape at a nursery where the Grewia are let to grow as they will. There was a beautiful Grewia at the Illawarra May sale and I was sorely tempted but I have one and was strong and let someone else take the prize home. And good luck to them. I have not had any trouble with pests and it is not a fussy tree. The Grewia is a rewarding tree to work with, it is a quiet achiever and with its very long term flowering period is a beautiful addition to a bonsai collection.



WHAT PEOPLE GET UP TO

David has consented to share one of his other interests with us – take it away David :-

Apart from bonsai I also play guitar. Both hobbies have features in common. They can take up a lot of free time:

- watching You-tube clips about it,
- talking about it,
- planning to do it,
- “researching” gear to do it with; and sometimes...
- doing it

There are always new tools and equipment to collect. So much so that I needed a guitar pedal board (Pedals are analogous to bonsai tools and pots). So I made a pedal board, resplendent with various pedals, as shown opposite.



Apart from buying gear you can make it. A true curse is building your own guitar. I started mine from a kit. It started out as:



+ blood, sweat and tears =



Of course, I changed the shape, the controls, bridge, tuners and pickups - and I found a supplier of abalone to replace the original black plastic fret markers! Apart from painting it, I also made the pickguard.

An even worse curse is building a guitar from scratch – I am resisting (actually, I have “been told”)

ARTICLES OF INTEREST

If you become aware of any articles on the web, or elsewhere, that may be of interest to members you can use this space to pass on the word. Just send an e-mail to the Club’s address with the contact details for the article and we can put it in this section.

The Illawarra Bonsai Society’s Newsletter contains an interesting article on re-potting – worth a look. The Bonsai Society of Sydney (Magumi) are having a bonsai display in the Calyx at the Royal Botanic Gardens, Sydney from 9th – 11th Sept – check their website for more details.



The RAS Garden Competition has just opened – so if you have a notable garden, this is your chance to show it off. See RAS website for details

**THINGS TO DO THIS MONTH by John
August**

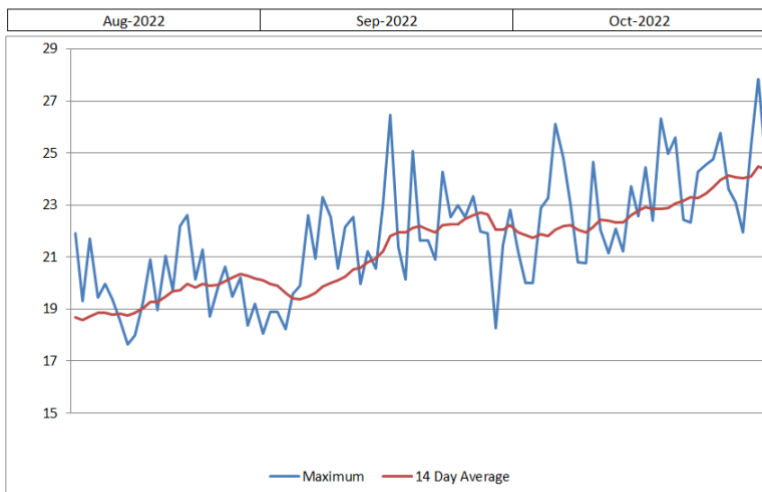
1. Finish repotting, branch and root pruning of deciduous trees in preparation for spring growth. The ideal time depends on the species and local climate but is best done when the leaf buds swell but have not burst.
2. As winter wanes, return [Tropicals](#) outside from their winter protection.
3. Ensure all trees requiring wiring have been done and prepare to monitor them all through spring to ensure they do not suffer wire cutting in.
4. Start fertilising of evergreen trees again.
5. It's the best time for deciduous Yamadori or to lift, root prune and replant trees from gardens for further growth.
6. Major redesign and work on trees can done now.
7. Grafting of Pines and other evergreens can be done.
8. Melaleuca cuttings can be taken now of half-ripe lateral shoots.
9. For species susceptible to mildew its worth another spray with Lime Sulphur.

Sources:

1. AusBonsai Wiki
2. "Bonsai, Its Art, Science, History and Philosophy" by D R Koreshoff
3. Dennis McDermott, School of Bonsai

As a further "Things to Do" aid, David has provided some BOM temperature forecasts for the upcoming months.

Sydney (Observatory Hill) Average Daily Maximum Temperatures



Reproduced by permission of Bureau of Meteorology, © 2022 Commonwealth of Australia.

Take it away again David:-

These charts show projected long term average temperatures for the Sydney (Observatory Hill) weather station. I have included the 14 day rolling average to even out the daily fluctuations.

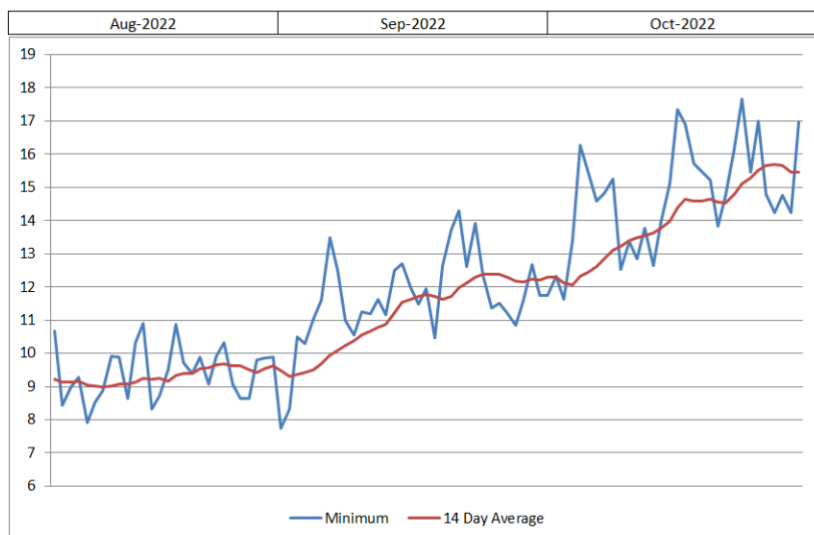
There are many guides that identify particular months or seasons in which to work on bonsais and in particular repot and root prune.

These are **guides only** and reflect historical winter temperatures. The real driver is a combination of length of day and overnight temperature. Even now members are reporting early budding on elms and flowering

of Crab Apples. There is also anecdotal evidence that the climate is changing and the growth habits of our trees are changing.



Sydney (Observatory Hill) Average Daily Minimum Temperatures



Reproduced by permission of Bureau of Meteorology, © 2022 Commonwealth of Australia.

I will keep reviewing the growth of our trees and see how that relates to the prevailing temperature.

My personal take to start repotting my deciduous trees from now on, focusing on any that are already showing bud swell. The chart shows that the average night time temperature rises rapidly in September. This suggests that most repotting should be done by then.

The general guide for Figs is to repot when the minimum temperature reaches 14°C. The chart shows this occurring in mid-October. I will probably start sooner given the average maximum temperature exceeds 22°C by mid-September.

BONSAI EVENTS CALENDAR

	Bonsai Society of Australia	Visit their website – www.bonsai.asn.au
	Nepean Bonsai Society Newsletter	Visit their website - www.nepeanbonsaisociety.org - see what the mountain people get up to.
26 th -27 th August 2022	Illawarra Bonsai Society “The Tops” Bonsai Weekend	Visit their website for more details – www.illewarrabonsaisociety.org - good content in their newsletter
	Bonsai Society of South Australia website	Worth a visit – www.bonsaisa.org.au
	Yarra Valley Bonsai Newsletter	Visit their website www.yarravalleybonsai.org.au
	Victorian Native Bonsai Club Newsletter	Visit their website – www.vicnativebonsai.com.au - well worth a look.
9 th – 11 th Sept 2022	Bonsai Society of Sydney	The BSS is hosting a bonsai display in the Calyx at Royal Botanic Gardens, Sydney. Visit their website for more details – www.bonsaisocietysydney.org.au
	Canberra Bonsai Society	Visit their website – www.cbs.org.au
8 th – 16 th October 2022	9 th World Bonsai Exhibition – A VIRTUAL event Also there is a photo competition for use at the World Bonsai Convention Photo Exhibition	www.world-bonsai-convention-2022.com Close-off date for comp 15 th May see website for details

Most clubs are have re-commenced meetings. Check out their web-sites or give them a call for meeting details. Attending another club is worth the effort.