



Sydney City Bonsai Club

NEWSLETTER

FEBRUARY 2024



Sydney City Bonsai Club

NEXT CLUB MEETING

13th February 2024

Marrickville Community Centre

Unit 44, 142 Addison Rd., Marrickville

Basics Classes @ 6.00pm

General Meeting @ 7.00pm

CONTACT DETAILS



0432 461 025



info@sydneycitybonsai.org.au



<http://sydneycitybonsai.org.au>



PO Box 486
Summerhill NSW 2130

COMMITTEE MEMBERS

Patron	TBA
President	John
Vice President	Oli
Secretary	David
Treasurer	Bryan
Program Manager	Lee
Newsletter Editor	Oli
Committee	Frank + above

MEMBERSHIP

Full membership	\$40
Concession	\$25
Family	\$55
Pensioner	\$25

Note – 2023/24 feess are overdue.

Payment can be by cash or electronically (see John).

NEWSLETTER CONTENTS

• Monthly Meeting Recap	Page 2
• Display Trees	Page 3
• Scott Martin Demonstration	Page 4
• Feb Meeting Agenda	Page 5
• Feb Basics Lesson	Page 5
• Less is more at the Arboretum	Page 6
• Treasures for \$50	Page 7
• Air Layers revisited	Page 8
• Royal Easter Show	Page 9
• Swap Table	Page 9
• Club Membership Fees	Page 9
• Facebook Page	Page 10
• Articles of Interest	Page 10
• Things to do this Month	Page 11
• Weather!	Page 12
• 2024 Program	Page 13
• Bonsai clubs and events	Page 13

EDITORIAL MATTERS

We're jam packaged this month! Keep the articles coming...

We always welcome any contributions from members, so if you have a project underway, have a query, want to sell/swap/buy something, or otherwise have a tale to share, please get in contact via info@sydneycitybonsai.org.au or one of the Committee members.



Sydney City Bonsai Club

MONTHLY MEETING RECAP - December

The December club meeting was cause for celebration - a year of mild weather (not constantly raining like in 2022) and a year of initiating some changes to improve the club.

We started proceedings with an update from our President John, who shared with members the vision of the club and where the committee wants to take things going forward. In summary: more demonstrations, better communication, and a pathway to be one of the best clubs in the state. John gave thanks for everyone who presented, shared knowledge, donated and simply attended the club, throughout the year.

On a little more of a bonsai note, Lee too some time to work a privet for everyone. She worked and explained how its canopy, silhouette and front would finally form the design. Readers are encouraged to go back and have a look at the last newsletter and you'll see the challenge in front of Lee. By the end, the branches were pulled down and space was left for the canopy to grow into and fill in the crown of the tree. It was of course growing in a handmade pot – not a grow container in sight!

We then finished with a everyone getting together to eat some wonderful homemade food. We talked about Summer plans, bonsais, jobs, other hobbies and holidays. The Xmas party is a casual affair, but it was wonderful see so many people enjoy themselves – which is what the club ultimately serves to do.

Dining out on the banquet, the editor missed photos of all the food...





Sydney City Bonsai Club

Display trees - December





Scott Martin - Demonstration

The club is pleased to announce...

AUSTRALIAN BONSAI MASTER

SCOTT MARTIN



Scott opened Bonsai Matsu in Melbourne in 2006. Between 2012 and 2016 he trained at prestigious nurseries in Japan to develop his skills to a high standard. He is an excellent demonstrator and gives much insight about styling while working on trees.

Saturday 13 April 2024

1:00 PM – 4:00 PM

Bush Music Hall, Hut 44
Addison Rd Community Centre
142 Addison Road, Marrickville

Members free, Non-members \$15

Flier for sharing:

[SCBC Scott Martin](#)



FEBRUARY MEETING AGENDA – Summer Beauties

From this year onward, we will be setting out a program for our club meetings. We want to encourage the planning of display trees and get people excited for future meetings. Refer to the last page of the Newsletter (this may be tweaked slightly throughout the year).

The February meeting will be Summer themed. Display trees will be the **summer beauties** you've had time to work on (or acquire). Blow everyone away with your summer triumphs!

For the meeting, we have a lot going on:

1. Quick club discussion

For those that couldn't make the Xmas party, the committee would love to discuss with everyone what is coming up over the next two years!

2. Throwback from 2023

Throughout 2023, there were many trees worked on and presented to the club. Quite often in Bonsai demonstrations, you might see a tree a few years later and miss the critical bridging step - here we will get to see the tree less than 12 months after recent work. Examples include; Frank's major trunk bend, David's elephant ficus and Lee's Baeckea from a local nursery!

3. Treasures for \$50

The club has been fortunate enough to be donated some trees from Ann Addison. Two were looked after over the Summer and will be up for sale at the February meeting. Details & photos can be found later in the newsletter.

4. A competition you say?

We'll announce a small competition in the meeting (for those that didn't get to read the newsletter). The premise is this: how much can you turn a tree around in 12 months? Members will need to bring a tree into the **March** meeting that needs serious love and attention. In March 2025, the member who has improved the tree the most will be crowned victorious! Voting will be from members. Prizes to be determined.

FEBRUARY BASICS LESSON 1

The Basics lesson this covers:

- What is a Bonsai?
- Where do I get one?
- How do I keep my tree alive?
- What makes a good Bonsai?
- Basic bonsai styles

The Basics lessons start at 6.00 p.m. and end at 7.00 p.m. in time for the General Meeting so best be on-time.

If any members plan on attending the training session on Tuesday 13th, would they please advise John by email at info@sydneycitybonsai.org.au that they will be attending.



Sydney City Bonsai Club

Less is more at the National Arboretum

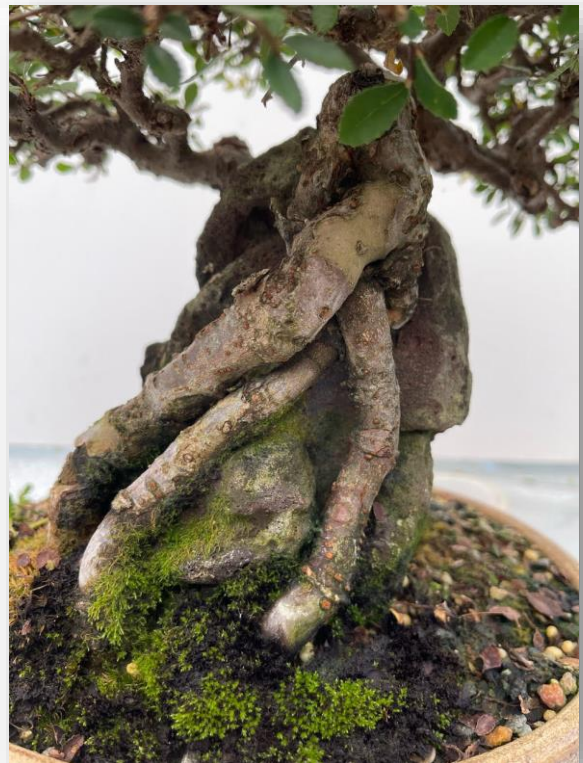
Lee Wright has two of her shohin trees on a one-year loan at the Bonsai and Penjing Collection at the National Arboretum in Canberra. Two littlies among the towering collection to show that bonsai can be small.



SAOTOME AZALEA on the right. It was purchased as a substantial stock plant several years ago with a big ball of foliage and gradually reduced to a shohin to emphasise the beautiful trunk.

CATLIN ELM on the left, root over rock. Started as a group in 2003, switched to an informal upright in 2004, then to a full cascade, then to full cascade root over rock. A number of years ago the tail was removed and it became what it is today. Perpetually tiny leaves, vigorous growth, and a lovely strong root structure in the back. It should be on a revolving stand but still...

A fantastic achievement to have trees at the National Collection. Well done, Lee.





Sydney City Bonsai Club

Treasures for \$50

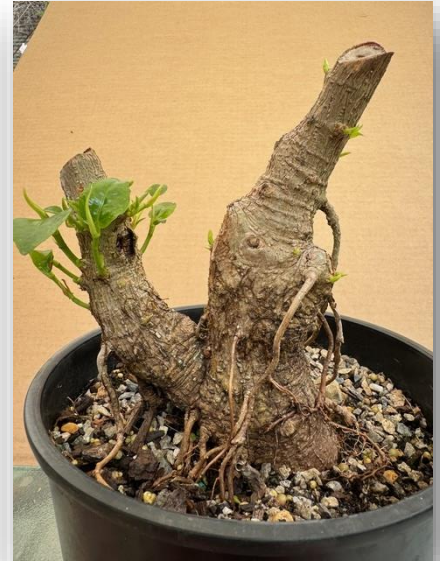
The club was fortunate to receive some trees at the end of last year, two of which have been cared back to health over the Summer. Both trees belong to the club and will be on sale at the February meeting for \$50 each. If they don't sell they will go to the Illawarra show/sale in May and be marked \$80 each and they will walk out. Don't miss this chance to get a tree with tremendous potential and help the club's fund raising for Scott Martin's April demo.

1. A stately JAPANESE MAPLE

Robust and healthy, great movement in the trunk, nice nebari, quite a few new shoots developing on the trunk. A similar tree at a local council nursery was selling for \$110 with a straight trunk. This beauty has all the potential one could want. During the mid January rains the maple doubled the number of leaves and is looking great.

2. PORT JACKSON FIG

It's over serious neglect and now robustly healthy and sprouting all over both trunks. Aged character double trunk, two fronts - take your pick. Two years to develop a crown and you have a bonzer bonsai with amazing character.





Air layers revisited – Chris Denton

I wrote previously on my experience air-layering two species, a Privet and a Golden Tea Tree. I had sort of successfully “done” a Golden Tea Tree, a notoriously temperamental species to propagate, previously but I wanted to prove it was not a fluke. The Privet was chosen to reduce its height so I could get it into my car!

One result was a great success and the other a maybe. No need to ask which was which.

The branch of the Privet targeted for the air-layering has thrived from the time the air-layer was applied. With the air-layer in place, the branch seemed to perform better than its adjacent branches, which is a bit confusing. When the branch was removed, vigorous roots had formed and it has flourished in a trainer pot since. The donor tree was not so fortunate. It suddenly had a big hole where the branch was removed and it did not look better for the experience. But hey, it's a Privet – something will grow back.

The Golden Tea Tree did not show the same vigorous root growth and they did not seem as well distributed. After a short time in the trainer pot it seemed the tree had a tenuous grip on life, still I did not give up. After several more weeks, things seemed to improve but we had a bit of hot weather and that did not assist. Dead growth was cut off and another more shaded location found. The tree seemed to surge ahead with new buds on old growth – a win at last, I thought. That was not the case. The new growth died back but the tree has struggled on and is still with us, but looking a bit sparse. But I have not given up, yet!





Sydney City Bonsai Club

Royal Easter Show

Put the dates in your diary now. The two Bonsai display and competition days are March 28 and 29.

We encourage members to enter trees into the competition.

RAS Bonsai Competition Registration.

Registering a tree on the RAS Website can be a bit tricky so here's a summary of how to go about it.

NOTE that registrations close on 14th February – The day after our next meeting

1. Go to the RAS website: <https://www.eastershow.com.au/Login>
2. Log in or create an account. (Note that you will have to give a bank account as part of the process even though you won't use it for any financial transactions).
3. Once you're in click on "ABOUT US"
4. This will take you to a series links, click on "Sydney Royal Competitions".
5. Page through until you find and then Click on "Flower and Garden"
6. Now you can click on "Enter Now" – Bonsai is the second selection from the top.
7. You can download the 'Schedule' as a PDF file if you want to. Bonsai is on Fourth Session Thursday March 28th.
8. When you get to the 'Bonsai' section there are fifteen categories: Select the relevant one(s) and complete the required data.
9. You then pay your entry fee. One fee regardless of the number of trees that you enter which also gives you an entry ticket for the day of competition.
10. Registration costs \$37.50 regardless of the number of trees which entitles you to one ticket to the show which normally costs \$45 so it makes good cents to enter.

Swap Table

There will be a Swap Table at the next meeting which will be stocked with whatever is brought along **AND** surplus trees from our street stall. Members are encouraged to contribute to the table so if you have surplus tree(s) or materials bring them along. Having some loose change available may see you with a bargain. The Swap Table was well supported at the August meeting.

To make things easy, owners should attach a price (even if it's free) and their name to their offerings. Also, a donation of 10% of the sale price is expected. The donation which should be included in the sale price, goes towards Club activities which all members are a beneficiary of.

Donations exceeding \$50 for the year will result in a free membership at the club the following year. So, get selling!

Bryan has recently brought some of his hand-made pots. We will always welcome any homemade pots!





Sydney City Bonsai Club

FACEBOOK GROUP & PAGE

The private Facebook group is still proving popular for swapping ideas and tips between members and anyone interested in participating, particularly new members, should contact John for an invitation.

We have also launched a Public Facebook page. Have a look at and feel free to drop a like! More info will be provided in the meeting.

[Sydney City Bonsai Club](#)

ARTICLES OF INTEREST

Bonsai Matsu Podcast “Bonsai Stuff” – Season 6 Ep 4

Scott Martin discusses his background process before doing a demonstration, this is fascinating to understand and worth a listen prior to him presenting at the club in April.

Canberra Bonsai Society

The Canberra Bonsai Society Newsletter “Wirrabara” has a full breakdown of preparing a bonsai for showing. They highlight some questions to ask yourself before displaying and even give tips to all stages of a tree’s life, juvenile to mature!

Bonsai Reshaped 2024

Bonsai Reshaped 2024 is being held at the National Arboretum Canberra from 11-14th April. Our international artists are Marija Hadhic from Croatia and Morten Albek from Denmark. If you can attend, it would be great to see you here. Please see the promotional material for more info on the event:

[Bonsai Reshaped](#)





THINGS TO DO THIS MONTH by John

1. We've had some very hot days this Summer. Water often enough to ensure the soil never dries out completely. This may mean watering 2 or 3 times a day on a hot day. Remember, excessive heat does not kill Bonsai, a lack of water does. Mulching of the top of the soil can help reduce evaporation through the day. Moss on top of the soil can be a good indicator of soil dampness.
2. Some species need considerable moisture through Summer including Wisteria, Banksia, Swamp Cypress, Callistemon, Eucalypts and Melaleuca. They may need to stand in water trays.
3. Warmer, humid weather can encourage pest and disease. Some species such as Oak and Crepe Myrtle are susceptible to mildew. Spray with fungicide.
4. Summer is the time to perform large chops on Japanese Maples and many other deciduous trees. The wounds will heal faster and not bleed as much as they would if cut during winter.
5. Continue pinching tips and pruning new growth for all trees through the Summer
6. Most natives can be repotted throughout the summer months. Watch for bud movement and then repot and root prune. Alternatively cut back hard then wait for the new buds to start to appear, then repot. You can root prune very hard at this time.
7. Many trees will slow down growth in late summer but keep up the feeding until start of Autumn and then reduce the amount on deciduous trees, this will assist in achieving nice colour later in the Autumn.
8. Watch maples, hornbeam and prunus for leaf burn on hot windy days. You may need to move them to a more sheltered spot.

Sources:

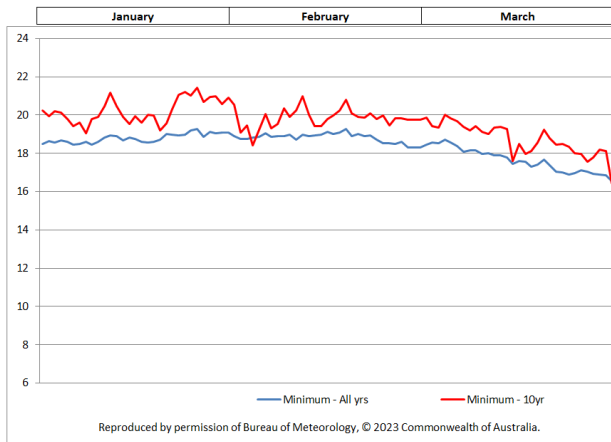
AusBonsai Wiki:

"Bonsai, Its Art, Science, History and Philosophy" by D R Koreshoff

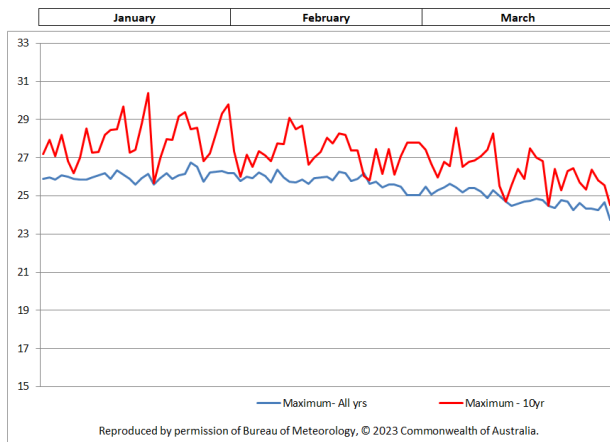


WEATHER TRENDS

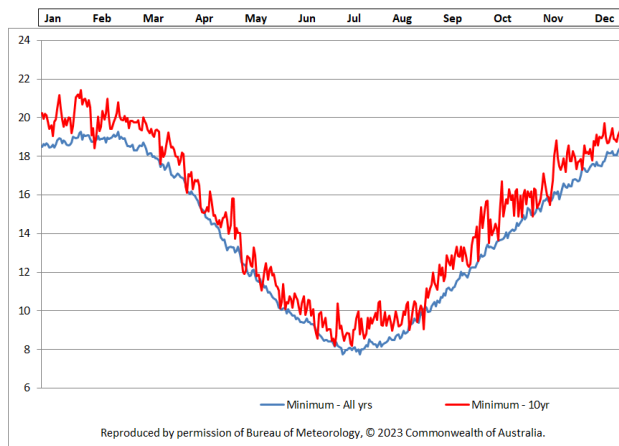
Sydney (Observatory Hill) Average Daily Minimum Temperatures



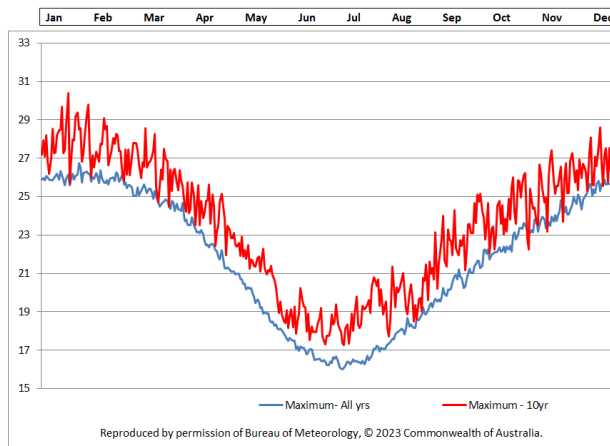
Sydney (Observatory Hill) Average Daily Maximum Temperatures



Sydney (Observatory Hill) Average Daily Minimum Temperatures



Sydney (Observatory Hill) Average Daily Maximum Temperatures



It is clear that the average temperature in Sydney has increased in the last 10 years when compared with the long term averages. This should be taken into account when deciding the timing for maintenance tasks. Trees can be repotted earlier in Spring or early Summer and later in Autumn than would previously have been recommended. Deciduous trees retain their leaves longer and reshoot earlier.



Sydney City Bonsai Club

SCBC 2024 PROGRAM – Lee Wright

To allow members to plan their year, the committee is excited to release the program for 2024. Further refinement & information will be provided in the newsletter prior to the meeting!

Month	Display Trees	Meeting
February	Summer holiday treasures	2023 trees revisited & workshop
March	Forest, multi trunk or fusion	Problem trees & workshop
April	Natives	Natives demonstration Saturday - Scott Martin Demonstration
May	Unusual trees/species	Stands and Soe, winter prep
June	Slanting style	Favourite trees
July	Root Over Rock	Clinton Nesci demonstration / workshop (TBC)
August	Twists and turns	Wiring & workshop
September	Cascade / Semi cascade	Workshop
October	Flowering	Flowering and workshop (Demonstration in the works)
November	Figs	Figs and workshop
December	Xmas	Xmas Party

BONSAI CLUBS & EVENTS

Date	Club	Links
	Bonsai Society of Australia	Visit their website – www.bonsai.asn.au
19 th Feb – Problem Trees	Illawarra Bonsai Society	Visit their website – www.illawarrabonsaisociety.org
	Bonsai Society of South Australia website	Website is worth a visit – www.bonsaisa.org.au
	Yarra Valley Bonsai Newsletter	Visit their website - www.yarravalleybonsai.org.au
	Victorian Native Bonsai Club	Visit their website – www.vicnativebonsai.com.au - well worth a look.
	School of Bonsai	Visit their website www.schoolofbonsai.com.au
	Canberra Bonsai Society	Put out a good newsletter - visit their website – www.cbs.org.au
Bonsai Open 6-7 th April	Central Coast Bonsai Club	For more details go to http://www.centralcoastbonsai.com.au
	Bonsai Society of Sydney	Go to http://www.bonsaisocietysydney.org.au
	Newcastle Bonsai Society	Check out http://newcastlebonsai.org.au/
17-20 th May	AABC National Convention	Event Details