



sydney city
bonsai club inc.

NEXT CLUB MEETING

Marrickville Community Centre

Unit 44, 142 Addison Rd., Marrickville

Basics Classes @ 6.00pm

General Meeting @ 7.00pm

CONTACT DETAILS



0432 461 025



info@sydneycitybonsai.org.au



<http://sydneycitybonsai.org.au>



PO Box 486
Summerhill NSW 2130

COMMITTEE MEMBERS

Patron	TBA
President	John
Vice President	Oli
Secretary	David
Treasurer	Bryan
Newsletter Editor	Chris/Oli
Committee	Frank + above

MEMBERSHIP

Full membership	\$40
Concession	\$25
Family	\$55
Pensioner	\$25

Note – 2023/24 fees are overdue.
Payment can be by cash, card or bank transfer.

NEWSLETTER CONTENTS

• Monthly Meeting Feedback	Page 2
• September Meeting Agenda	Page 4
• September Basics Lesson	Page 4
• Club Membership Fees	Page 4
• Swap Table	Page 4
• Facebook Page	Page 5
• Feedback on recent Canberra Dig	Page 5
• What Fun by Lee	Page 7
• What People get up to	Page 8
• Articles of Interest	Page 8
• Things to do this Month	Page 9
• Events Calendar	Page 10

EDITORIAL MATTERS

We always welcome any contributions from members, so if you have a project underway, have a query, want to sell/swap/buy something, or otherwise have a tale to share, please get in contact via info@sydneycitybonsai.org.au or one of the Committee members.





sydney city
bonsai club inc.

MONTHLY MEETING FEEDBACK - August

The August meeting was preceded by a Basics class which kicked off at 6.00pm. The class, led by John, started with a discussion on fertilizers followed by an air-layering demonstration. Class notes were provided, as usual, and the demonstration was reported to

be very informative. Nothing like a good demo to complement the theory bit. The Editor was a bit slow taking a photo of the end product but take it from me, the likelihood of a successful outcome is high. If anyone conducts successful air layers in the next few weeks, please send the club some photos.

At the meeting proper, our new President, John, welcomed new and established members and proceeded straight to what

people were waiting for – a talk on bonsai pot types, characteristics, selection etc., by Lee, a self confessed bonsai pot-o-holic. Members were not disappointed. Lee provided a comprehensive overview of the critical part a pot plays in the presentation of a bonsai with quite a few examples of her own that she'd brought along. After the presentation, there were a number of relevant questions from members. The discussion went on for some time and this reflected the members' interest.



The pot presentation occupied a good bit of the available time but there was some left for a show-and-tell session with the topic being bare trees. There were some nice trees benched and even in their bare state they had a noteworthy presence. It is informative to see the structure of trees and try to imagine how they will develop with the change of season. Curiously there were two advanced Persian Ironwood specimens which, given they are not a species encountered commonly in bonsai, was a bit unusual. All trees had

interesting stories. After Show-and-Tell members carried on in bonsai related discussions.



Two Persian Ironwoods at the one meeting?



sydney city
bonsai club inc.



Species represented included Crab-apple, Maple, Persimmon, Quince, Elm and others.



Given the Shoe-and-Tell followed a presentation on pots, as a bit of revision, it is probably worth considering the relationships between the pots and trees put on display. Can't see too many mismatches.

It was noted that Canberra Bonsai Society was planning a "dig" for the 20th August in the Canberra area. John contacted CBS to get permission for our members to attend if there was interest. There is feedback later in the Newsletter.



sydney city
bonsai club inc.

**SEPTEMBER MEETING AGENDA –
Spring Blooms**

The theme for the September meeting will be Spring Blooms. The main agenda item for the meeting will be a talk by Clinton Nesci (from the Ray Nesci Bonsai Nursery). Clinton will be primarily focussed Spring with Bonsai. However, I am confident that he will

be prepared to address any queries you may have. Clinton is very knowledgeable and all members are encouraged to take advantage of Clinton's availability. He will also have some stock items for sale including potting mix if it has been pre-ordered. Click on the following link to pre-order:

<https://www.raynescibonsai.com.au/index.php>. Bring a bit of cash along and see what you can pick up.

Display trees are following the Spring Blooms focus. So bring along your "Bud and Blooms" trees. With the unseasonably warm weather we are having, we can expect a good turnout.

We are planning a trip to Bonsai World at Jilliby on Sunday 22nd October. Members are requested to have a think about whether they would like to participate. Last time the 8 members who attended got a very good demo on natives and then had a picnic at a local park on the way back.

**SEPTEMBER BASICS LESSON –
Spring tasks and Styling**

The Basics lesson this month will be Spring styling trees. The Basics lessons start at 6.00 p.m. and end at 7.00 p.m. in time for the General Meeting so best be on-time. NOTE - **financial** members can join in the Basics lessons if they wish, but, as a courtesy, please let

John or Bryan know in advance via the Club e-mail.

CLUB FEES ARE OVERDUE

Club Fee are well overdue. Members are requested to settle their membership payments ASAP – time is marching on. Fees can be paid by cash or card or by bank transfer. Electronic payment details are:-

Sydney City Bonsai Club

BSB: 032-152

A/C No.: 166305

Make sure to include your name in the transfer details so it is clear who has paid.

SWAP TABLE

There will be a Swap Table at the next meeting which will be

stocked with whatever is brought along **AND** surplus trees from our street stall. Members are encouraged to contribute to the table so if you have surplus tree(s) or materials bring them along. Having some loose change available may see you with a bargain. The Swap Table was well supported at the August meeting.





sydney city
bonsai club inc.

To make things easy, owners should attach a price (even if it's free) and their name to their offerings. Also, a donation of 10% of the sale price is expected. The donation which should be included in the sale price, goes towards Club activities.

FACEBOOK PAGE

The private Facebook page run by John Brown is still going strong and anyone interested in participating, particularly new members, should contact John for an invitation. There is some good quality chat on the Facebook page and members are encouraged to join.

FEEDBACK ON RECENT CANBERRA 'DIG' —by John and Oli

Visit to the Canberra Bonsai Society (CBS) Dig at Fadden Forest, Sunday 20th August 2023

While the committee was trying to organise a Yamadori dig for our members, Chris noticed that CBS were planning one on August 20th. I contacted them and got the OK for some of our members to join in. We had some members express interest but, in the end, just John, Oli and Lewis, attended.

I drove down the night before to get an early start on the morning. The drive down on Saturday afternoon had been cold and windy the whole way which didn't bode well for the dig. However, early on Sunday, the wind dropped and the frosty morning cleared for a day of digging in the forest. Everyone agreed it was perfect conditions and members of the public were also out with smiles.



Left to right: Lewis, Tony (President CBS), John, Oli and Barry Nash (Dig organiser)



Lewis digging out a small leaf privet – to be confirmed!

Fadden Forest is about 15 minutes' drive from Canberra and is on fairly level ground making the going quite easy. About 20 members of CBS were assembled in the parking area when we arrived and Barry Nash, the organiser from CBS, and who had applied for and obtained a permit, gave a talk to those assembled on where to look and what species we could expect. The species that we were allowed to collect were basically any of the exotics but no natives. Some CBS members had scoped out the area in advance, and were ready to go to their spots.



sydney city
bonsai club inc.

Oli, Lewis and I set off in a direction that Barry said had some junipers. About 5 minutes and 100 meters into the forest we came across an area with dozens of small junipers up to about two metres in height. I decided to try for a smaller one with a 4 cm dia trunk, so while I got out my implements, Oli and Lewis set off to see what else they could find.

The soil was almost pure fine dry sand and therefore not too hard to dig but even a small tree requires a lot of energy. There were clearly more specimens than we could ever collect but after digging just two junipers I realised that I had reached the limit of my energy and available space in the car. Oli arrived back at the car park with a very nice prunus with buds just bursting into small leaves. Lewis arrived a bit later with a triple trunk version of the same species. They will both bring a cart to put trees in next time, after lugging their trees all the way back to the cars!

CBS is fortunate indeed to be near so many good forests with a multitude of specimens ideal for bonsai and all within short distances from Canberra. Should we be fortunate enough to have the opportunity to participate again, I for one will be participating.

Thank you again, CBS!



Oli preparing his prunus for the trip back to Sydney



Oli inspecting the roots of a potential yamadori



**WHAT FUN –
by Lee**



Early excavation of the trunk

I bought an olive in Adelaide and brought it home to Sydney. A lot of cutback in the first styling and I uncharacteristically ignored the large deadwood area in the centre of the bulbous trunk. I initially wasn't going to carve it but recently decided that I would... for fun and entertainment. I love carving.

I have invested a lot in imported bits for my Dremel, aggressive bits. They are terrific on my small to medium size trees but they need to be soaked in a special bit cleaning solution for days to get the embedded wood out of the teeth. The bits I need are always in the solution. That's Murphy's Law.

I started carving the olive and when I carve, I normally divide my carving into three stages... excavation, initial refinement and final refinement. Often I leave weeks between each stage to let the tree settle and gradually assess what has been done and what is to do. This olive was to be no different. I clogged up three aggressive bits getting into the centre of the trunk but couldn't reach the connecting areas because the bits were too

short. Solution.... use a standard drill bit, small size. This worked extremely well. Actually, better than the specialist bits. When I still wasn't achieving connection I changed to a small bit with a longer shank and created my through passageways. These are for air and often light and most importantly, drainage.

I did my excavation and straight into the first refinement and I am thrilled with the concept of working with drill bits instead of bonsai carving tools. I find there is more detail that can be created, a longer reach for thicker areas and, best of all, the bits don't clog. A short go-over with my wire brush at the end of a session and the bits are clean and the bonsai bits sit in the cleaning solution for days longer and I am not constantly changing bits. The only reason I changed in this carving session was to get a longer shank with a correspondingly longer reach. If you are into carving or considering it, give drill bits a go before investing heavily into Dremel bits or imported bits. You might find, as I have, it's as good as or a better way to do your carving.

End of stages one and two, done in one session. Now I will leave the tree for a month or more to dry the carved areas and partially naturalise them before doing more refinement. I can see where adjustments need to be made but I will let the tree rest and let it talk to me some more before I power up my Dremel for more refinement.





sydney city
bonsai club inc.

WHAT PEOPLE GET UP TO

Recent member Oli not only loves his own backyard, but he also likes other people's backyards too. No, he's not looking over your fence, he's in the Australian backcountry when weather allows him to!

He was lucky enough to spend some time in North America, where he chose to pick up the one hobby that doesn't align with the Australian climate. Often spending weeks planning his trips, he treks on foot "skinnying" to the top of mountains, where he puts his snowboard back together and rides the slopes down to the bottom. Yes, a chairlift is faster, but the silence and tranquillity of the Australian Alps is hard to beat.



ARTICLES OF INTEREST

If you become aware of any articles on the web, or elsewhere, that may be of interest to members, you can use this space to pass on the word. Just send an e-mail to the Club's address with the contact details for the article and we can put it in this section.

The Illawarra Bonsai Society August Newsletter has a comprehensive article on growing natives in Australia and some of the common misconceptions artists and horticulturalists have.

BSA Annual Show

The Bonsai Society of Australia is staging their annual show on the 15th – 17th September at Castle Hill. It is an event worth going to if you have an interest in bonsai. More details including location and entry costs can be found on their website: <https://bonsai.asn.au/events-calendar/>

Canberra Bonsai Society

The Canberra Bonsai Society Newsletter "Wirrabara" has a number of interesting articles including considerations for collecting wild trees (Yamadori). They are also having their annual show 6th – 8th October. They put on a good show and you can go to the National Bonsai Collection while you are down there. More details in their Newsletter or website.



**THINGS TO DO THIS MONTH by John
SEPTEMBER**

- 1 Deciduous trees should be showing signs of new growth by now and consequently should have already been repotted.
- 2 Spring is when trees grow quickly and can get out of hand if you do not continually monitor and maintain them. Trees require continual tip pruning to keep compact growth and develop ramification and shorten inter-nodes. New growth on deciduous trees will be vigorous and the way they are trimmed depends on what stage the tree is at.
 - a. For younger trees the trunk will thicken more if you allow shoots to lengthen before trimming back to one or two leaves. Don't worry if leaves are large and internodal length is long because you are trying to establish strength and bulk.
 - b. For medium age trees, allow first leaf to open and removing the next leaf only after it becomes fully opened.
 - c. For mature trees, the pinching process changes. The first leaf remains and then the emerging leaf is nipped out before opening.
- 3 Pines are actively growing, and the candle reduction must be performed to balance the growth around the tree.
- 4 When planning to repot natives prune as necessary a week or two before repotting. That way the buds get a head start on regrowth before repotting.
- 5 As the overnight temperatures get above 15 degrees C tropical trees can be returned to outdoors from winter protection and start work on them.
- 6 Start fertilizing evergreens again and ease into your fertilising program for other trees, but not if you've just repotted. Wait for about two weeks after they've been repotted to avoid burning the new root growth.
- 7 Evergreens that have been in the ground for growth can be lifted and potted, or root pruned and replanted for further growth.
- 9 Pines, and in particular Japanese Black Pine, prefer their roots cut back this month so repot pines and junipers now.
- 10 Flowering trees such as Apricot, Cherry and Quince should have flowered by now. Foliage develops quickly after flowering so trim back early aggressive growth to improve bifurcation.
- 11 In Sydney, Azaleas are regularly attacked by leaf sucking insects. A spray program with Confidor should be commenced in September to eradicate lace bugs and continue until the end of Summer. High humidity will result in diseases destroying the flowers. As soon as the buds begin to open place the tree under cover and hand water the soil only.
- 12 Wisteria can be spectacular in flower. Remove spent flowering heads as soon as the flowering is finished. Long thin canes (whips) will develop. They will be unlikely to flower and should be cut back leaving the 2 or 3 unopened buds located where the whips emerge from the plant. These remaining buds will produce compact growth and particularly flowering material.
- 13 September is a good time to collect Yamadori and also do air layering.
- 14 Clean winter moss off trunks.

Sources:

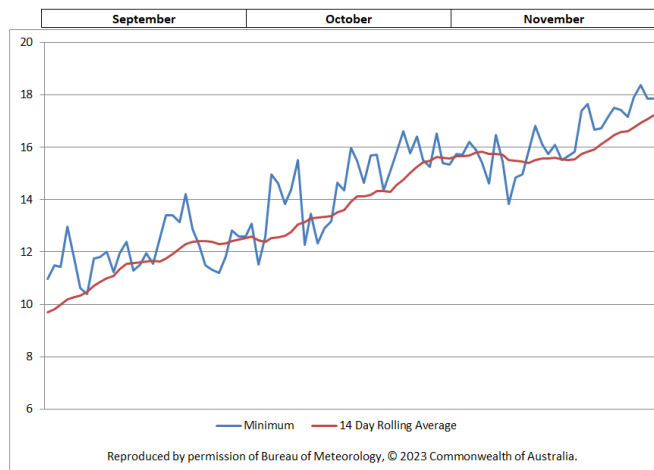
1. AusBonsai Wiki
2. "Bonsai, Its Art, Science, History and Philosophy" by D R Koreshoff



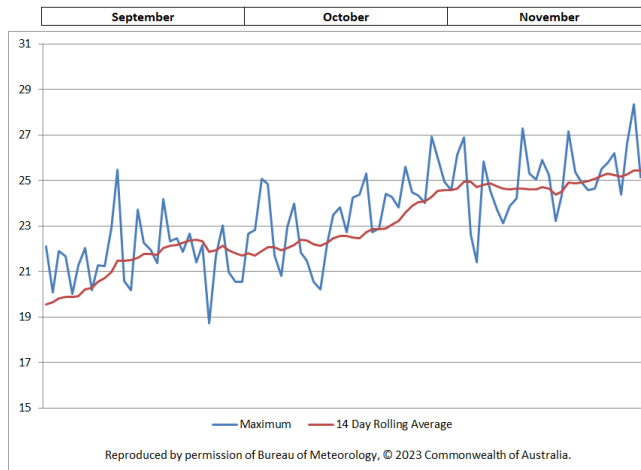
sydney city
bonsai club inc.

Min/Max BOM temperature forecasts (Observatory Hill) for the upcoming months including 14 day rolling average, provided by David follow:

Sydney (Observatory Hill) Average Daily Minimum Temperatures



Sydney (Observatory Hill) Average Daily Maximum Temperatures



BONSAI EVENTS CALENDAR

Annual Show 15 th – 17 th September	Bonsai Society of Australia	Visit their website – www.bonsai.asn.au	See website for more details
	Nepean Bonsai Society Newsletter	Visit their website - www.nepeanbonsaisociety.org -	See what the mountain people get up to.
	Illawarra Bonsai Society	Visit their website – www.illawarrabonsaisociety.org - good content in their newsletter	
	Bonsai Society of South Australia website	Website is worth a visit – www.bonsaisa.org.au	
	Yarra Valley Bonsai Newsletter	Visit their website - www.yarravalleybonsai.org.au	
	Victorian Native Bonsai Club Newsletter	Visit their website – www.vicnativebonsai.com.au - well worth a look.	
	School of Bonsai	Visit their website – www.schoolofbonsai.com.au	
Annual Show 6 th –9 th October	Canberra Bonsai Society	Put out a good newsletter - visit their website – www.cbs.org.au	Check website for details.
	Central Coast Bonsai Club	For more details go to www.centralcoastbonsai.com.au	
Sept 23 rd Demonstration by artist Sean Hood	Bonsai Society of Sydney	Go to www.bonsaisocietysydney.org.au	

Check out other clubs' meeting dates via their web-sites or give them a call for meeting details. Attending another club is worth the effort.